

# FINNSAILER 29

Length O.A.	8.90 m	29 ft 3 in
Length W.L.	7.96 m	26 ft 2 in
Beam	2.78 m	9 ft 2 in
Depth	1.81 m	6 ft 0 in
Draft	1.00 m	3 ft 4 in
Displacement about	4,5 tons	
Ballast keel, external, iron	1250 kgs	
Sail area	95 m <sup>2</sup>	970 sq ft
Max. speed	8 knots	



The FINNSAILER 29 motor sailer is a very seaworthy and comfortable boat, built on a traditional fishing-boat hull.

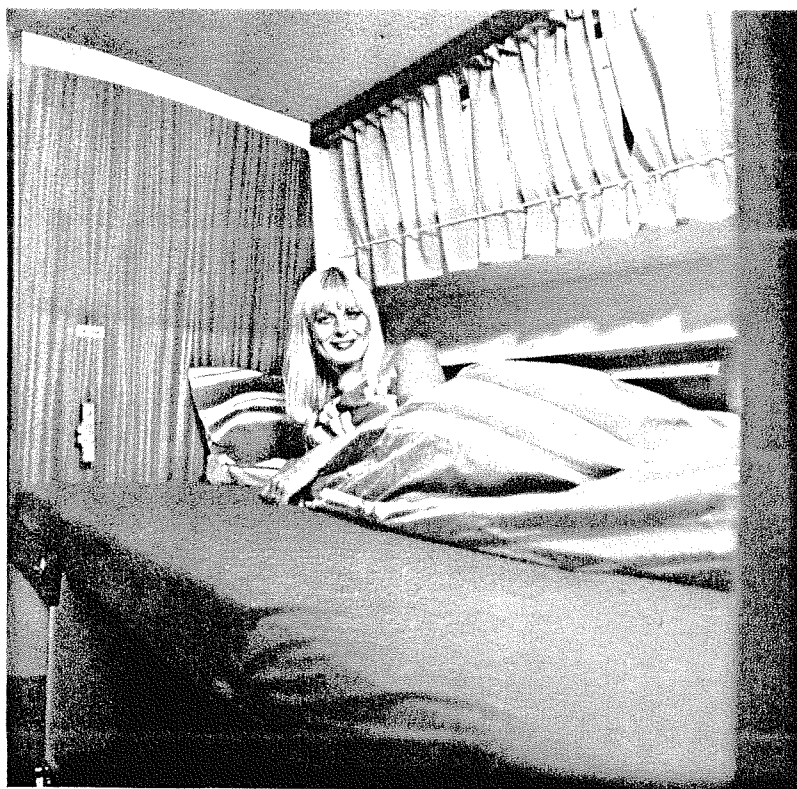
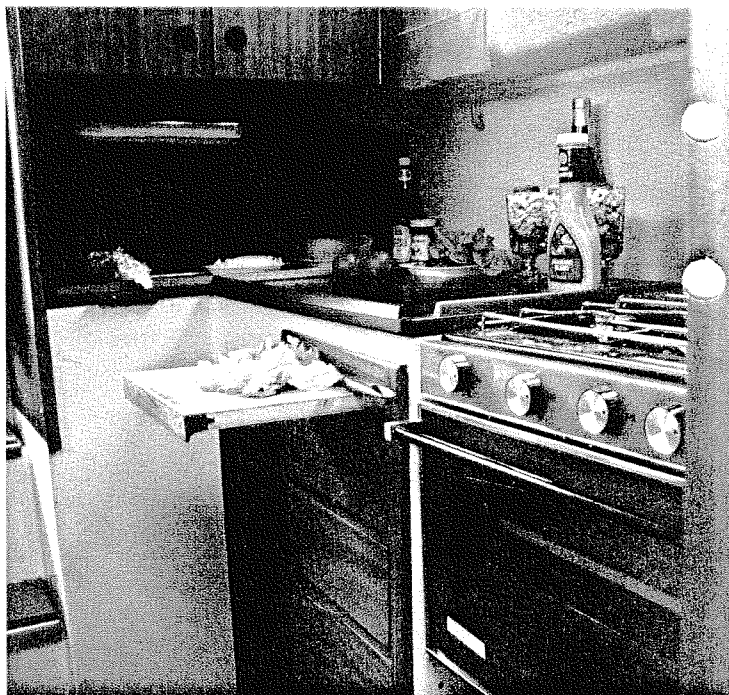
Hull, superstructure and deck are moulded in glassfibre reinforced polyester resin in accordance with the requirements of Lloyd's Register of Shipping, and every boat is delivered with the "Hull Moulding" certificate of this classification society.

The boat is divided into the following compartments: chain locker, forward cabin, toilet, saloon, wheelhouse and cockpit, aft cabin. The interior is made of glassfibre plastic and selected mahogany or teak. All raw glassfibre surfaces are tastefully covered with soft heat insulating plastic tapestry. In the forward

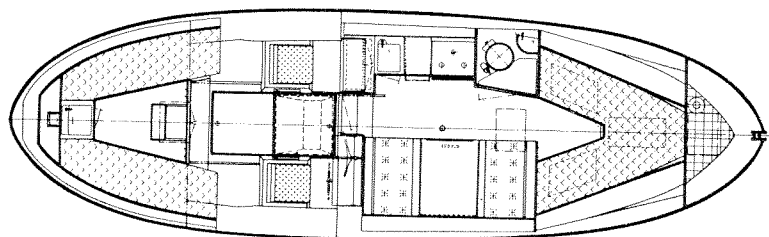
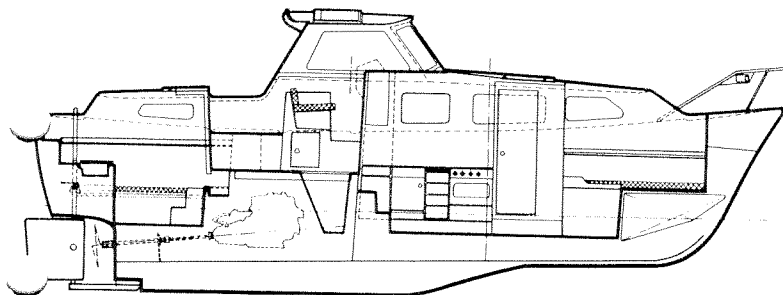
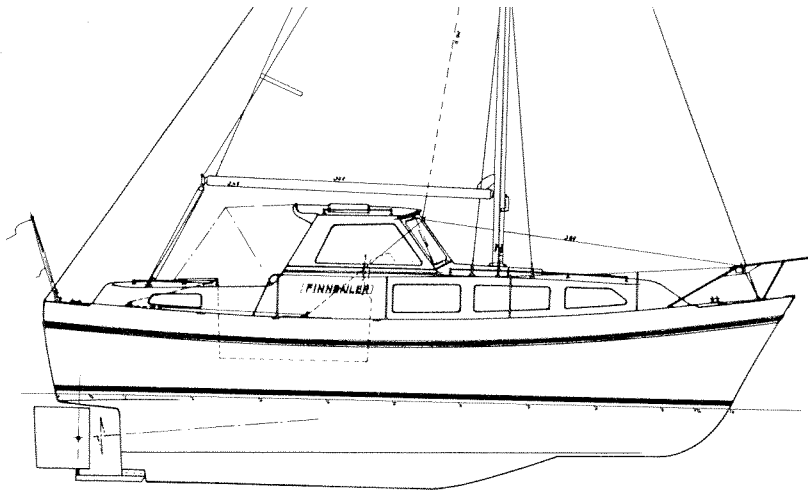
cabin there are two full length berths with shelves above at hull sides. Stowing space under the berths.

The head includes a marine toilet and wash basin with electric pressure water system. In the saloon on starboard side there is a wardrobe for hanging clothes and a dinette. A spacious berth for two can be provided by lowering the table and placing the backpieces between the sofas. On port side is placed a spacious galley with a three burner gas stove with oven installed on gimbals, a sink furnished with electric pressure water system and a large icebox. There are ample lockers and drawers. The pilot and co-pilot seats in the wheelhouse are padded with plastic foam covered with artificial leather. A hatch in the roof

above both seats. All gauges and the engine remote control lever are easily reached and visible at one glance in the instrument panel. There are two full length berths in the aft cabin, shelves along hull sides and at forward bulkhead, and stowing space under the berths. The wash basin aft between the berths is connected to the electric pressure water system. All berths and the backpieces of the dinette are fitted with mattresses of plastic foam covered with good terylene furniture fabric. The floor is completely covered with a tastefully chosen carpet of terylene and the windows are furnished with curtains which match to the interior. All windows are of triplex glass.







#### SANITARY EQUIPMENT

Fresh-water tank of polythene plastic, 82 US gallons. Electric pressure water system in galley, head and aft cabin. Raritan marine toilet or similar. Gas bottle in chain locker, drainage into free space. Gaspipe of copper. All through hull fittings connected to the keel. Hand operated bilge pump.

#### LIGHTS

Navigation lights in accordance with international rules. Ceiling and panel lights in steering cabin. Ceiling lights in aft cabin and saloon. Two bed lights in forward cabin. Lights in galley and toilet.

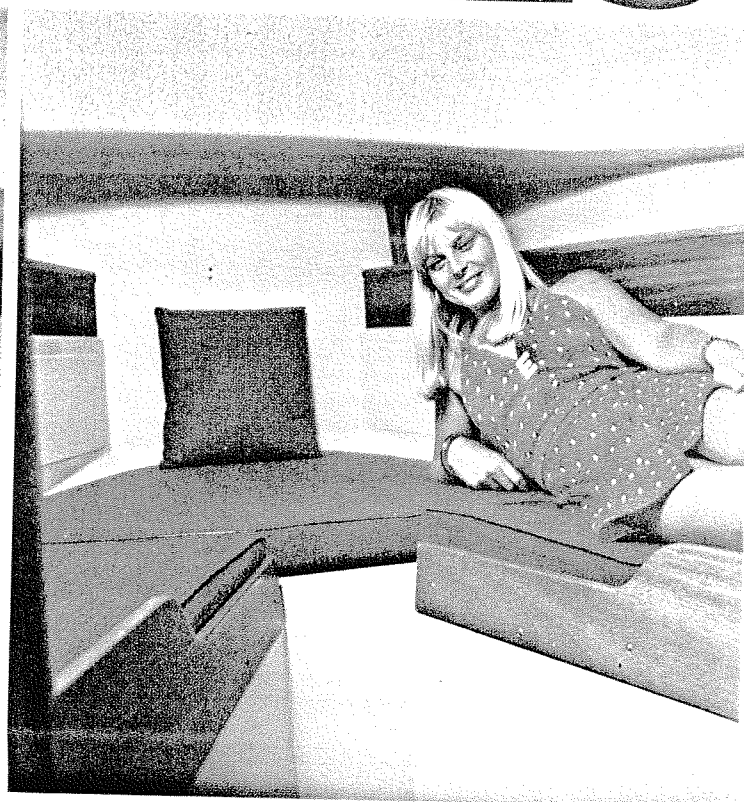
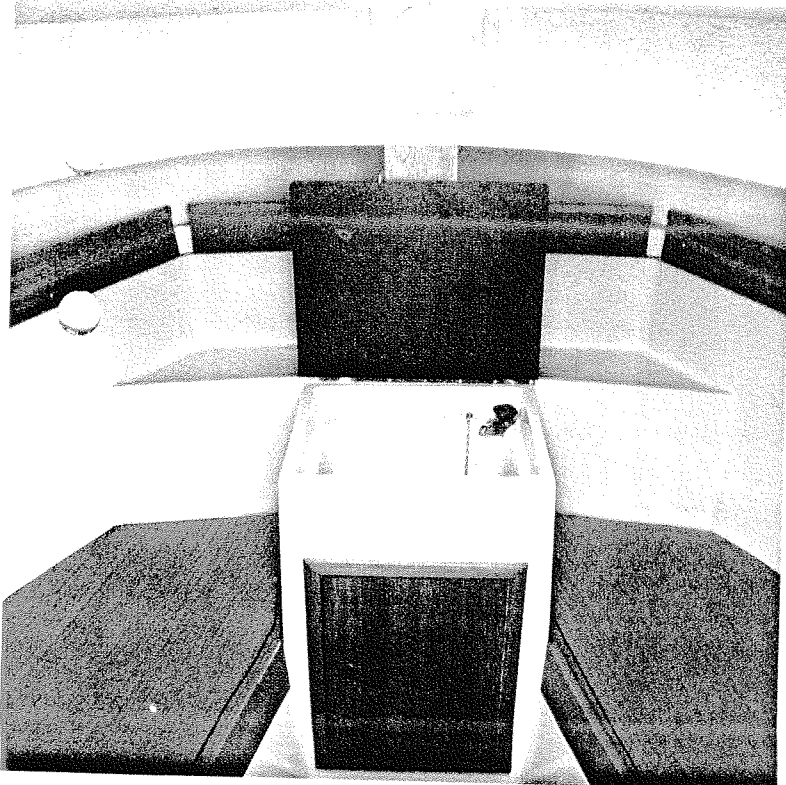
#### RUDDER ARRANGEMENT

Double plate rudder and skeg of sandblasted mild steel, painted with epoxy tar. Rudder stock of stainless steel. Single cable Morse wheel steering from wheelhouse, additional steering with emergency tiller in cockpit.

#### SAILS AND RIGGING

Main sail and jib of terylene, altogether 270 sq. ft. halyards and sheets of terylene rope, blocks of fibre. Mast and boom of silver anodized aluminium alloy, fittings of stainless steel or anodized aluminium. Stays, bottlescrews and chain plates of stainless steel. Sheet winches of stainless steel and tracks of anodized aluminium. Roller reefing.

# FINNSAILER 29

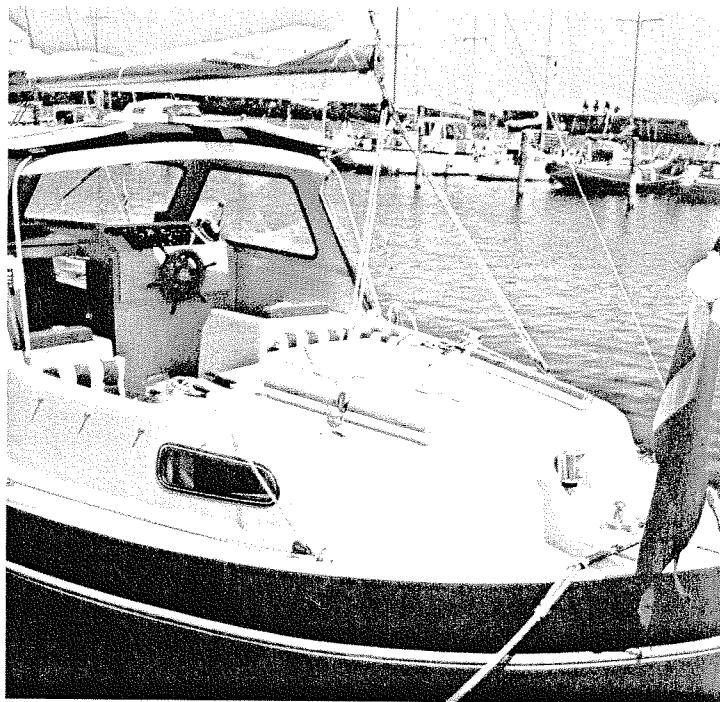




#### DECK

All deck surfaces of non-skid type. Hatch to the anchor box which is separated by a water and gas proof collision bulkhead from the rest of the boat. Pulpit and stanchions of stainless steel. Lifeline of stainless steel wire with PVC covering.

Handrails on cabin and wheelhouse roofs. Two sturdy double cross bollards on fore and aft deck, two chocks fore and aft, ventilators to saloon, aft cabin and head, filling fittings to fuel and fresh-water tanks, flagstaff fitting — all of seawater proof aluminium. Bow fitting of stainless steel. Flagstaff.



#### ENGINE AND ELECTRIC EQUIPMENT

Engine Perkins diesel 4.108 M Lowline, 4 cylinders, 50 BHP 3600 rpm, Borg-Warner reduction gear 2.57:1, sea-water cooled (fresh-water cooling optional), Morse remote control for engine. Engine mountings and shaft coupling of flexible type. Flexible water cooled exhaust pipe. Propeller shaft and shaft tube of stainless steel. Alternator 43A/12V, electric starter. Electric two wire installation, battery 90 Ah. Fuel tanks 2 x 40 US gallons. Electric fuel meter, tachometer, oil pressure gauge, cooling water thermometer, ampere meter, starter motor lock, electric windshield wipers.

Specification subject to change without notice.



OY FISKARS AB  
TURUN VENEVEISTÄMÖ

20810 Turku 81, Finland Tel. 921-359 100